

Casaferro®
Porcelain. Elegance. Sustainability

NT NORDIC STONE



NORDIC STONE
ORIGINAL STONE

NORDIC STONE
ORIGINAL STONE





Pietra nordica nata sulla scia della precedente Revstone e Shadestone, trae ispirazione da un calcare, rivisitata in chiave nordica, a partire dalla gamma di colore per ottenere la finitura naturale della superficie. Questo riferimento all'ambiente dei paesi nordici si riflette nelle nuances materiali di una pietra sedimentaria che ricorda il forte legame con una natura selvaggia, affascinante, dura e attraente. Quando lo guardi e lo tocchi puoi quasi respirare tutta la bellezza pura, senza compromessi, di questa natura.



Casaferro®
Porcelain. Elegance. Sustainability



Nordic Stone born in the wake of the previous Revstone and Shadestone, draws inspiration from a limestone, revisited in a Nordic key, starting from the colour range to achieve the natural finish of surface. This reference to the environment of the Nordic countries is reflected in the material nuances of a sedimentary stone that recalls the strong bond with a wild and fascinating, hard and attractive nature. When you look at it and touch it you can almost breathe all the pure beauty, without compromise, of this nature.



NERO

ROCK GREY

SNOW

SAND MOON

SIZE



750x1500mm 30"x60"



600x1200mm 24"x48"



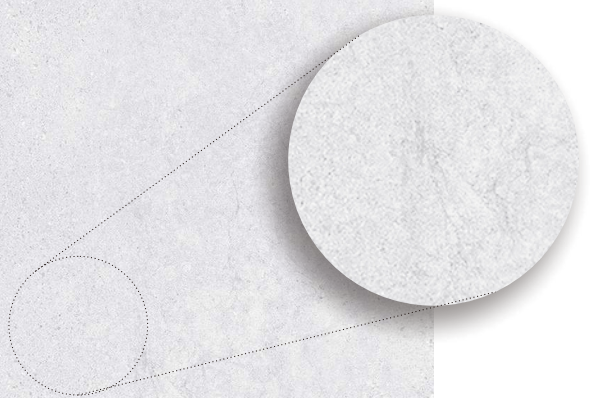
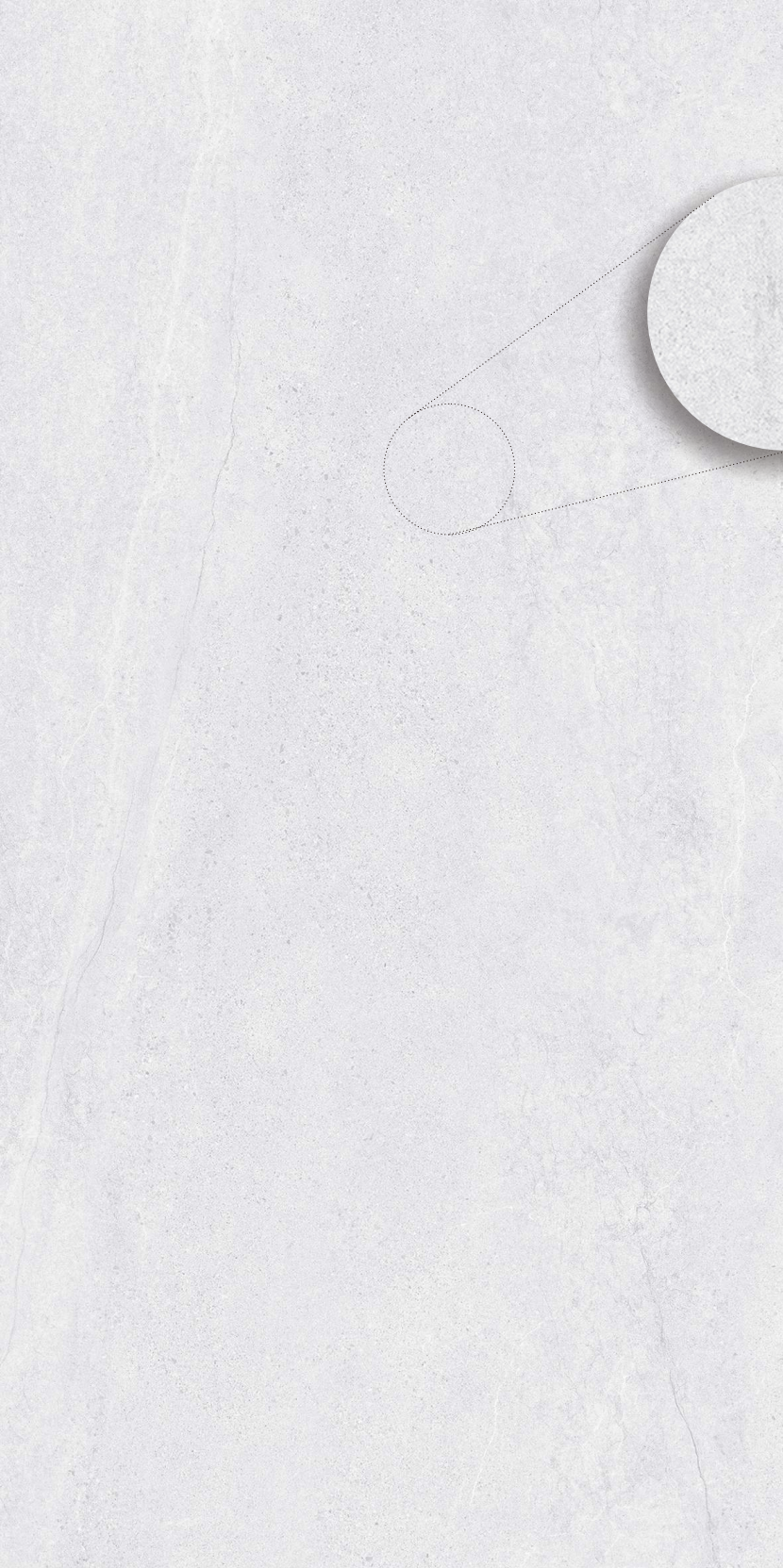
600x600mm 24"x24"



Floor-715NT01
750X1500mm 30"x60"



Floor-715NT05
750X1500mm 30"x60"



Floor-715NT00
750X1500mm 30"x60"

Draws inspiration from a limestone,
revisited in a Nordic key

Nordic Stone / 北欧石



20 PATTERNS(600x600mm) / 10 PATTERNS(600x1200mm) / 10 PATTERNS(750x1500mm)



SNOW-715NT00 750x1500mm 30"x60"
Surface: 50° Super White Body, Digital Ink



SNOW-612NT00 600x1200mm 24"x48"
Surface: Digital Ink



SNOW-60NT00 600x600mm 24"x24"



Floor-715NT01
750X1500mm 30"x60"



This reference to the environment of the Nordic countries is reflected in the material nuances of a sedimentary

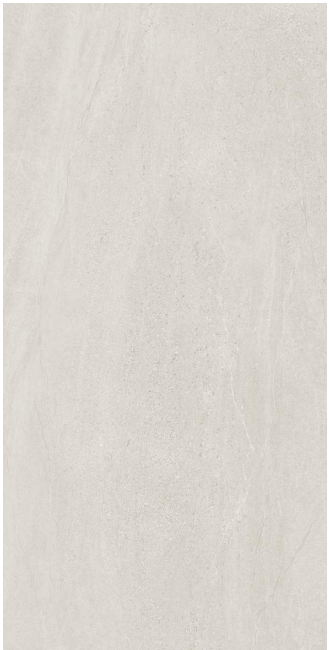
Nordic Stone / 北欧石



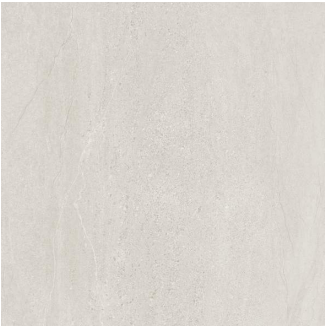
20 PATTERNS(600x600mm) / 10 PATTERNS(600x1200mm) / 10 PATTERNS(750x1500mm)



SAND MOON-715NT01 750x1500mm 30"x60"
Surface: 50° Super White Body, Digital Ink



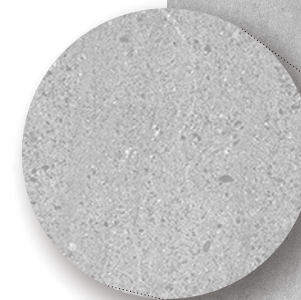
SAND MOON-612NT01 600x1200mm 24"x48"
Surface: Digital Ink



SAND MOON-60NT01 600x600mm 24"x24"



Floor-715NT05
750X1500mm 24"x48"



stone that recalls the strong bond
with a wild and fascinating
hard and attractive nature.

Nordic Stone / 北欧石



20 PATTERNS(600x600mm) / 10 PATTERNS(600x1200mm) / 10 PATTERNS(750x1500mm)




ROCK GREY-715NT05 750x1500mm 30"x60"
Surface: 50° Super White Body, Digital Ink



ROCK GREY-612NT05 600x1200mm 24"x48"
Surface: Digital Ink



ROCK GREY-60NT05 600x600mm 24"x24"



When you look at it and touch it,
you can breathe almost all the
pure beauty of this nature without
compromise.



Floor-612NT05
600X1200mm 24"x48"

Nordic Stone / 北欧石



20 PATTERNS(600x600mm) /10 PATTERNS(600x1200mm)

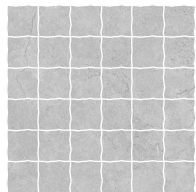


NERO-612NT09
Surface: Digital Ink 600x1200mm 24"x48"

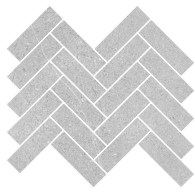


NERO GREY-60NT09
600x600mm 24"x24"

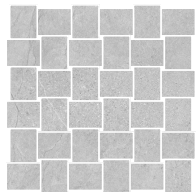
MOSAIC



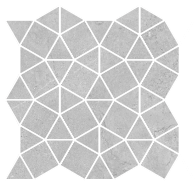
M12
300X300mm



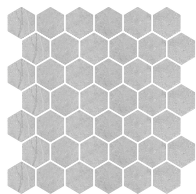
M21
320X268mm



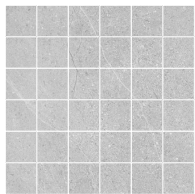
M13
285X285mm



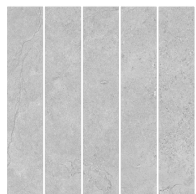
M32
275X275mm



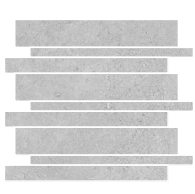
M31
300X300mm



M11
300X300mm



M22
300X300mm



M23
300X300mm



M51
610X813mm

PRODUCT FEATURE 产品特点 / APPLICATION 应用 / INSTALLATION GUIDANCE 安装指南

 TEXTURE RATING 纹理评级	 MIN LAYING GAP 3mm 最小铺设间隙3mm	 RECTIFIED 精准的尺寸	 WALL TILES 墙砖	 FLOOR TILES 地砖	 COLOURS 颜色	 SIZES 尺寸	 SURFACES 表面效果
----------------------------	-------------------------------------	------------------------	----------------------	-----------------------	-------------------	-----------------	----------------------



V1



V2



√ V3



V4

V1=Uniform Appearance
V3=Moderate Variation
V2=Slight Variation
V4=Substantial Variation

TECHNICAL SPECIFICATION 技术标准

MEASUREMENT AND SURFACE APPEARANCE 尺寸和表面效果	STANDARD PRESCRIBED VALUES 标准规定值	VALUES 标准值(600×600mm)	VALUES 标准值(600×1200mm)	VALUES 标准值(750×1500mm)
Dimensions & Surface Quality				
Length and Width 长度和宽度	±0.6% max.	-0.03-0.03%	-0.03-0.03%	-0.03-0.03%
Thickness 厚度	±5% max.	9.0-9.5mm	10.0-10.5mm	10.0-10.5mm
Orthogonality 直角度	±0.5% max.	-0.06-0.07%	-0.06-0.07%	-0.06-0.07%
Straightness of sides 边直度	±0.5% max.	-0.06-0.07%	-0.02-0.03%	-0.02-0.03%
Surfaces flatness 表面平整度	±0.5% max.	-0.05-0.07%	-0.09-0.11%	-0.09-0.11%
Physical Properties				
Water absorption 吸水率	≤0.5%	≤0.5%	≤0.5%	≤0.5%
Breaking strength 断裂强度	≥1300N	2265N	4031N	4031N
Bending resistance 抗弯曲性	≥35N/mm²	38N/mm²	40N/mm²	40N/mm²
Resistance to deep abrasion 耐磨程度	≤175mm³	Class 4	Class 4	Class 4
Temperature shock resistance 耐高低温系数	No visible crack 没有明显裂纹	No visible crack 没有明显裂纹	Durable 耐温性好	Durable 耐温性好
Resistance to frost 防冻性能	No visible crack 没有明显裂纹	No visible crack 没有明显裂纹	No visible crack 没有明显裂纹	No visible crack 没有明显裂纹
Non-slip 防滑系数				
Colour resistance to light 颜色耐光性	no colour changes 不褪色	no colour changes 不褪色	no colour changes 不褪色	no colour changes 不褪色
Chemical Properties				
Chemical resistance 耐化学性	no visible changes when subjected to chemicals 遇化学物质不受影响	Durable 耐化学性能好	Durable 耐化学性能好	Durable 耐化学性能好
Resistance to staining 抗染色	≥3	Class 5 5级	Class 5 5级	Class 5 5级

PACKING DETAILS 包装细节

SIZES 尺寸	PCS/CTN 片/箱	M²/CTN 平方/箱	KG/CTN 千克/箱	CTN/PALLET 箱/托
600x600mm	4	1.44	32	40
600x1200mm	2	1.44	35	60
750x1500mm	4	2.25	48	40

Every appearance of **Casaferra**[®]
can make you feel the elegance of life

C10, Central Section, China Ceramics Industry Headquarters

No.68, West Ji Hua Road, Foshan City

www.casaferra.com.cn

TEL:0757-8533 9907